



ATHENA
INSTITUTE OF NURSING

PROSPECTUS

**EMPOWERING MINDS,
ENRICHING CAREERS**

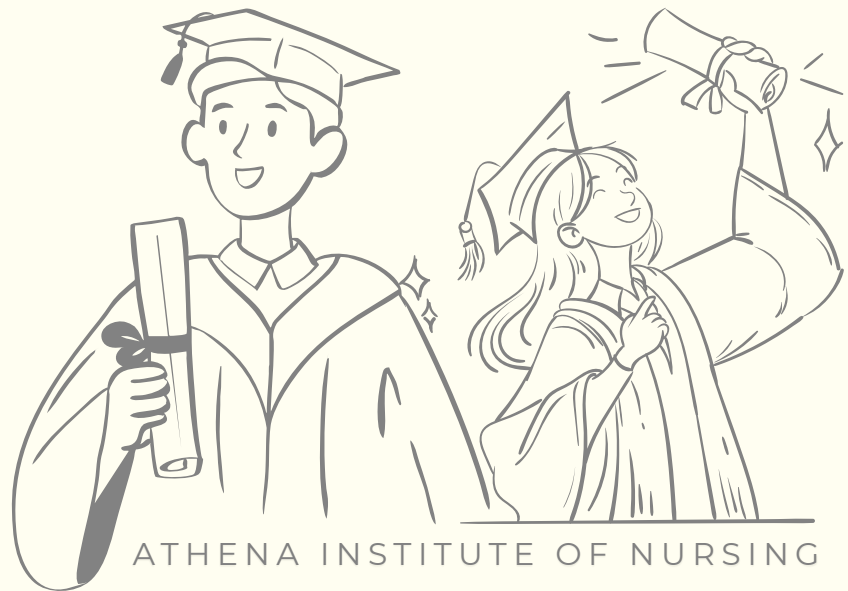


NIGHTINGALE PLEDGE

“I solemnly pledge myself before God and in the presence of this assembly, to pass my life in purity and to practice my profession faithfully. I will abstain from whatever is deleterious and mischievous and will not take or knowingly administer any harmful drug. I will do all in my power to maintain and elevate the standard of my profession and will hold in confidence all personal matters committed to my keeping and all family affairs coming to my knowledge in the practice of my calling. With loyalty will I endeavour to aid this physician in his work and devote myself to the welfare of those committed to my care.”



THE ATHENA LEGACY



Welcome to Athena Institute of nursing, where we nurture the future healthcare professionals, creative minds, and visionary leaders of tomorrow.

At Athena, we offer a diverse range of courses to cater to various interests and career aspirations. Whether you're passionate about GNM Nursing and B. Sc. Nursing we have the perfect program for you.

Synonymous with excellence in higher education, the Athena Institute of Nursing has always stood at the forefront in meeting the ever-growing challenges of the healthcare sector.

At Athena Institute of Nursing, we believe in the power of education to transform lives and communities. The foundation of our institute was laid by a dedicated team with a shared vision to empower individuals to become skilled professionals who excels not only in their chosen fields but also as responsible, forward-thinking global citizens.

Our mission is to provide an environment that nurtures growth, encourages innovation, and fosters a commitment to excellence. Through world-class education and industry-focused training, we aim to equip our students with the skills, knowledge, and confidence needed to thrive in today's fast-paced, ever-evolving world.

We subscribe to the belief that "The function of education is to teach one to think intensively and critically. Intelligence plus character – that is the goal of true education." we strive to Our commitment to quality and excellence goes beyond textbooks cultivate holistic development, preparing students for the challenges and opportunities of the future.

Under the leadership of our visionary Chairman, Mr. Wasif Nisar, and with the support of a dedicated team, Athena Institute of Nursing continues to set new standards in professional education. Our focus is on shaping individuals who are not only proficient in their disciplines but also contribute to societal advancement with passion, integrity, and leadership.

At Athena, we are committed to providing a 360-degree education that goes beyond academic achievements to include character building, professional ethics, and life skills, ensuring our students are ready to excel in every aspect of their careers and lives.

Our Vision

At Athena, we aspire to create a transformative impact by nurturing skilled professionals across diverse fields, GNM Nursing & B.Sc. Nursing. Our vision is to foster socially meaningful education, innovation, and research while upholding the highest standards of moral, legal, and ethical values. We are dedicated to shaping future leaders who will contribute to building a better, more inclusive, and globally connected world.

Our Mission

To inspire holistic growth and development across all disciplines by seamlessly integrating academic excellence with co-curricular and extracurricular engagement.

To create a dynamic and supportive learning environment that empowers students to explore their passions, exceed their potential, and become leaders in their fields.

To deliver education rooted in quality, ethics, and values, equipping students with a global perspective and professional acumen.

To prepare future-ready graduates who can adapt to evolving challenges and make meaningful contributions across industries, including healthcare, management, technology, and hospitality.

To nurture leadership, critical thinking, and a sense of responsibility, enabling students to lead with confidence, integrity, and compassion.

To foster innovation and excellence by bridging education, research, and real-world application through interdisciplinary collaboration and forward-thinking partnerships.

To shape socially conscious professionals who are committed to creating a positive impact and addressing the ever-changing needs of a global society.

Our Objectives

Here are the key objectives that guide Athena Institute of Nursing in achieving its mission of holistic education and excellence:

1. Balance academic excellence with personal development.
2. Prepare students with practical, job-ready skills.
3. Foster leadership grounded in integrity and social responsibility.
4. Inspire creativity and problem-solving through innovative education.
5. Prepare students for diverse, global opportunities.
6. Offer guidance, internships, and networking to enhance career prospects.
7. Promote collaboration and contribute to global challenges.
8. Offer state-of-the-art resources for intellectual growth.
9. Encourage contributions to society and global communities.
10. Build leadership and teamwork through diverse activities.

CHAIRMAN'S MESSAGE

At Athena, our mission is simple – to empower students to become skilled professionals and compassionate leaders. We are here to help you turn your dreams into reality by providing education that meets international standards and prepares you for the real world.

Whether you're stepping into healthcare, we've designed our programs to give you the knowledge, hands-on experience, and confidence you need to thrive in your career.

But we're about more than just academics. At Athena, we believe in shaping well-rounded individuals who are not only experts in their fields but also ethical, responsible, and ready to contribute to society. Our world-class faculty, modern facilities, and supportive learning environment are all here to help you grow academically, professionally, and personally.

Education is a journey, and we are here to guide you every step of the way. It brings me immense pride to see our students graduate, stepping into the world with skills, values, and the drive to make a difference.

I invite you to join us and become part of the Minerva family, where we are shaping the future, leaders at a time.

Wishing you great success in your journey ahead!

WASIF NISAR
Chairman



VICE- CHAIRMAN'S MESSAGE

Hello, dear students and parents,

At Athena Institute of Nursing, we firmly believe that learning is a lifelong journey—and we are here to make it both meaningful and accessible for everyone. Whether you've joined us for nursing programmes, we're committed to prepare you for life beyond the classrooms.

We provide a supportive environment with cutting-edge infrastructure designed for hands-on learning. Our curriculum goes beyond theory, focusing on practical knowledge, critical thinking, and intellectual growth. It's all about equipping you to handle real-world challenges with confidence.

Remember, once you're part of Athena, you're family. "Once an Athenian; Always an Athenian." Together, let's make this journey unforgettable.

DEEPAK PATEL
Vice-Chairman

SECRETARY'S MESSAGE

Dear Students,

It is my pleasure to welcome you to the Athena Institute of Nursing—a place where your journey toward a fulfilling and rewarding career begins.

At Athena, we believe in the transformative power of education to shape not just careers but lives. Whether you aspire to lead in healthcare, management, allied sciences,

or any of the diverse fields we offer, you've chosen a path that combines passion with purpose.

We are deeply committed to providing an exceptional academic environment where students receive world-class exposure and holistic development. With state-of-the-art facilities, experienced faculty, and a strong emphasis on values, Athena offers an unparalleled learning experience.

At Athena, we foster a safe, inclusive, and supportive atmosphere where every student can thrive intellectually and personally. I warmly welcome all aspiring students to join us and promise that together, we will help you to build a future that you can be proud of. Here's to a journey of growth, success and limitless possibilities.



SOMROOP MUKHERJEE
Secretary

PRESIDENT'S MESSAGE

Dear Students,

Thank you for considering the Athena Institute of Nursing as the foundation for your future. It's an honour to welcome you to our family, where we are committed to helping you achieve your dreams and build a thriving career.

At Athena, we take pride in combining academic excellence with professional learning. Our mission is to nurture your talent, empower your intellect, and provide you with the tools to make a meaningful impact on the world. Every student who joins us comes with hopes and aspirations for a brighter future, and we work tirelessly to ensure those dreams are realised.

At the Athena, you'll find a vibrant environment that fuels creativity, leadership, and personal growth. Our programmes are thoughtfully designed to challenge and support you, blending innovative curriculum with hands-on learning to ensure you're ready for the professional world. I look forward to meeting you and witnessing your journey of growth and success.

AMAR SAMANTA
President

VICE-PRESIDENT'S MESSAGE

Dear Prospective Students and Parents,

Thank you for considering the Athena Institute of Nursing! We're thrilled to welcome aspiring students who are ready to take on the challenges of higher education. Whether you're interested in healthcare and nursing fields, we're here to guide you toward achieving your dreams.

We're looking for students who are passionate, curious, and ready to put in the hard work required to excel. Whether you're preparing for a career in nursing or any other area, we provide the support and resources to help you succeed.

At Athena, we aim to offer you the best educational experience possible whether it's through state-of-the-art facilities, hands-on learning, or extra-curricular opportunities. We're here to help you achieve your academic goals and prepare you for a fulfilling career ahead.

I can't wait to see you grow and shine at Athena!

SANTANU SAMANTA
Vice-President

DIRECTOR'S MESSAGE

I'm so glad you're considering us for your future. At Athena, we've always been committed to providing top-notch education, and we're thrilled to share that we now offer a wider variety of programs than ever before. Whether you're interested in Hospital and healthcar sector so there's something for everyone here.

These are exciting times, and the opportunities available to students are more abundant than ever. We've worked hard to make sure our programs align with global standards and are designed to equip you with the skills you need to succeed-no matter where your career journey takes you. Whether it's nursing, business administration, or any other field, we are here to

help you develop both the knowledge and hands-on experience needed for success. So, take the leap! We're excited to be part of your journey and can't wait to see where your hard work and determination will take you. The future is yours for the taking, and we're here to help you make it happen. All the best for your journey with us. Let's make it a great one!ation!

PRITAM DAS
Director

MARKETING DIRECTOR'S MESSAGE

Hello and welcome to Athena Institute of Nursing, Amtala, West Bengal! It's an absolute pleasure to have you here. At Athena, we've built a strong reputation as one of the top institutions, not just in nursing, but in a wide range of fields. We are committed to providing education that meets international standards, and I'm excited to be part of this incredible journey with you. Then Minerva was founded, our vision was clear: to prepare skilled professionals who would improve healthcare through top-quality education. This vision drives everything we do, and we're constantly evolving to make sure we provide the best possible learning experience for all our students.

Our curriculum blends excellent teaching with real-world application, ensuring that you gain both theoretical knowledge and hands-on skills. We're especially focused on making sure our nursing students along with students from all our other programs are well-prepared to bring technological advancements into their work, staying ahead in an ever-changing world. If you're looking for a place that will challenge you, help you grow, and prepare you for a meaningful career in hospital and healthcare field, you've come to the right place. Athena is where you'll find endless opportunities to learn, grow, and become the best version of yourself. I look forward to seeing you thrive here and to support you as you step into a future full of exciting possibilities!

MD RIPON SHAIKH
Marketing Director



GENERAL NURSING AND MIDWIFERY (GNM)

Duration:3 Years

Eligibility: Passed 10+2 with English and must have obtained a minimum of 40% at the qualifying examination and English individually for any recognized board.

The General Nursing and Midwifery (GNM) program is a three-year diploma designed to prepare students for a career in patient care. It provides in-depth training in clinical nursing, medical procedures, and healthcare ethics.

The program combines classroom learning with hands-on clinical experience, ensuring that graduates are well-equipped to handle diverse medical situations. GNM graduates play a vital role in hospitals, clinics, and community healthcare by assisting doctors, managing patient care, and educating the public on health practices.

OBJECTIVES



To equip students with the essential knowledge and skills required for professional nursing practice.



To develop expertise in patient care, medical assistance, and emergency response.



To foster ethical values, empathy, and strong communication skills in nursing professionals.



To prepare graduates to adapt to evolving healthcare challenges and provide high-quality patient care.



To encourage continuous learning and career advancement in the nursing field.

GNM graduates have a wide range of opportunities in the healthcare sector, including hospitals, nursing homes, health departments, and NGOs.



Staff Nurse: Provide direct patient care in hospitals and clinics.



Home Nurse: Offer medical support and assistance to patients at home.



Health Visitor: Conduct community health programs and awareness campaigns.



Community Health Worker: Work in public health initiatives and rural healthcare programs.

BASIC B.Sc. NURSING



Duration: 4 Years

Eligibility: Passed 10+2 with 50% marks in science subjects (Physics, Chemistry, Biology-Botany/Zoology) SC/ST candidates should have scored a minimum of 40% marks in science subjects

The Basic Bachelor of Science in Nursing (B.Sc. Nursing) is a four-year undergraduate program designed to develop competent and compassionate nursing professionals. The program provides students with the necessary knowledge and clinical skills to deliver high-quality nursing care across diverse healthcare settings. It emphasises a holistic approach to patient care, covering disease prevention, health promotion, and rehabilitation. This program aims to cultivate a professional attitude and equip students with the expertise to assess and manage the nursing needs of individuals, families, and communities at all stages of life.

OBJECTIVES



To provide a well-balanced professional and general education in nursing.



To develop skilled and self-directed nursing practitioners who are also responsible citizens.



To assess and address the healthcare needs of individuals, families, and communities from birth to end-of-life care.



To ensure patient safety and deliver comprehensive nursing care tailored to different health conditions.



To focus on illness prevention, health restoration, and rehabilitation.

CAREER OPTIONS AND JOB PROSPECTS



Staff Nurse: Work in hospitals, clinics, and healthcare centres, providing direct patient care.



Nursing Educator: Teach and train aspiring nursing students in academic institutions.



Community Health Nurse: Serve in public health programs, promoting wellness and disease prevention.



Critical Health Nurse: Work in intensive care units (ICUs) and emergency departments.



Nurse Administrator: Manage healthcare units and oversee nursing staff operations.

PARENT HOSPITAL



BEHALA BALANANDA BRAHMACHARI HOSPITAL & RESEARCH CENTRE



**HOSPITAL INTERNSHIP AND
PLACEMENT PARTNER**



**BEHALA BALANANDA BRAHMACHARI
HOSPITAL & RESEARCH CENTRE**

FACILITIES

Library and Information Centre:



A large collection of books, journals gathered over a period of 12 years provide rich study and reference material. The library is equipped with a collection of 6069 books.

We also subscribe to a number of National and International print journals. The library also has a vast collection of dissertations and project reports. The library comprises of a state of art computer lab.

Classroom:

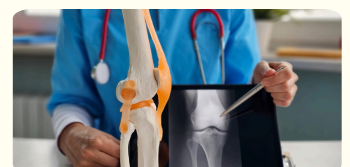


We have created a safe learning environment with state of art facilities to ensure holistic development of our students. We have a separate building for all the courses which creates a conducive environment for learning.

The Classrooms are spacious and well ventilated with adequate seating arrangements. ICT enabled classroom help us to provide a perfect blend of classroom and online classes.

Lab Facilities

Our high-tech laboratories allow linking of theories of classroom with the practice of caring for patients in a hospital environment. The labs are well equipped with models and simulators to provide students with hands-on experience in the performance of various procedures.



HOSTEL

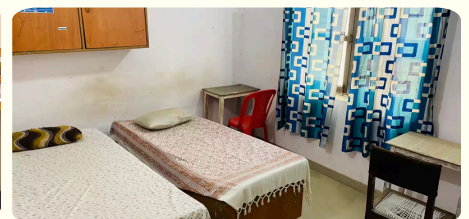
Athena Institute of Nursing have been constructed to provide a safe and congenial atmosphere for the students. Separate hostel facilities are available for boys & girls. The living spaces are structured to inspire harmony. We have spared no pains in making the surroundings fresh and green. Such a conducive environment is ideal for the germination of productive thoughts and ideas.

The Hostel serves as home away from home for these students.

Any form of ragging is strictly prohibited and attracts severe punishments.

HOSTEL FACILITIES: FEATURE

- Separate Hostels for Boys & Girls.
- Furnished Rooms and attached bathroom in the Boys Hostel.
- Ragging is strictly prohibited and strict discipline is maintained.
- 24hrs power backup.
- Medical Care, Health Clinic, 24 hrs Security & Housekeeping facility available.
- Nutritious and multi cuisine delicacies.
- A Senior Faculty Member who acts as a Warden-Friend-Guide is the exclusive feature of the Hostel.



TRANSPORT

Students visit various speciality hospitals and community areas across Kolkata for clinical and community health nursing postings. Transportation to these areas is facilitated by 3 buses which are managed by the college to ensure safety and comfort.



CAMPUS AMENITIES HIGHLIGHTS



Expensive Campus
Campus housing academic and residential facilities.



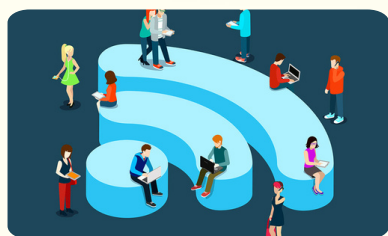
Smart Classrooms
Focus on student-centered learning, technology integration, and fostering collaboration.



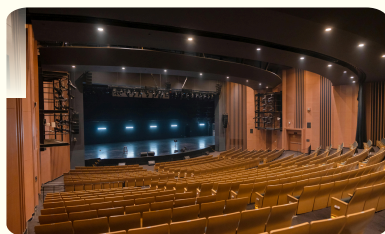
Excellent Location
Located in the heart of the city....10mins from Joka Metro Station...



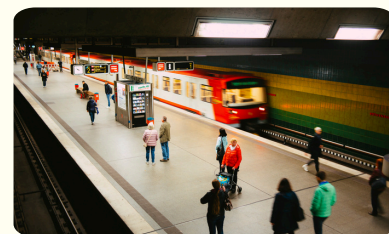
24/7 Security
Comprehensive campus security with CCTV surveillance and trained personnel.



Wi-Fi Campus
High speed internet access across the entire campus.



Well Equipped Auditorium
Large auditorium for cultural events, guest lectures and ceremonies.



Indian Railway & Metro Station
College is located just 28 km away from Howrah Railway Station, 28km Sealdah Railway Station, 19km Baruipur Railway Station and 25km Diamond Harbour
JOKA METRO STATION JUST 11 km.

OUR PROUD STUDENTS

**DISTINCTION
HOLDERS**



TAJMIRA KHATUN
DOMKAL SUPER
SPECIALITY HOSPITAL



ANAMIKA SAHA
CHANCHAL SUPER
SPECIALITY HOSPITAL



RIMI DEY
JANGIPUR SUPER
SPECIALITY HOSPITAL



NABANITA BASAK
KPC MEDICAL COLLEGE
& HOSPITAL



BISHNUPRIYA GAYEN
CANNING SUB-DIVISIONAL
HOSPITAL



SULTANA KHATUN
KANDISDH
(MURSHIDABAD)



MANDIRA DAS
KPC MEDICAL COLLEGE
& HOSPITAL



RUMI KHATUN
KANDISDH
(MURSHIDABAD)



SUKHEN DAS
JANGIPUR SUPER
SPECIALITY HOSPITAL



SABINA YESMIN
MURSHIDABAD
MEDICAL
COLLEGE & HOSPITAL



RESHMI SULTANA
KANDISDH
(MURSHIDABAD)



NAINA SARKAR
DOMKAL SUPER
SPECIALITY HOSPITAL



MIM SORA
APOLLO SUPER-
SPECIALITY HOSPITAL



SOUMEN MONDAL
UNIPATH DIAGNOSTIC
CENTRE



ANJANA MAITY
ATLAST HEALTH POINT



JAYATI BASAK
APOLLO SUPER-
SPECIALITY HOSPITAL

Campus Life in AIN



Campus Life in AIN



Campus Life in AIN



TESTIMONIALS



Jesmina Khatun

It is an honor to be a student of Athena, where I received adequate theory and practical knowledge in the field of management. The college provided us with good clinical facilities in hospitals like Atlast Health Point, which gave excellent exposure and helped us to provide hands on care. I am grateful to the principal and staff for their constant support and guidance.

"Grateful for "Athena", paramedical program that shaped my career. Real-world simulations and dedicated faculty made all the difference. The seamless transition to my dream nursing position was possible with Minerva Education of paramedical courses effective career placement services."



Soumen Mondal



Sayeda Sk

"I am proud to be a graduate of "Athena". The comprehensive curriculum and hands-on clinical experiences prepared me well for the challenges that lied ahead on my path. The guidance and support from the nursing faculty were invaluable. With the assistance of the institutes career services, I secured a nursing position shortly after graduation. I am grateful for the education and opportunities that have set the foundation for my fulfilling career in nursing."

"Studying nursing was an enriching and fulfilling journey. The program not only equipped me with the necessary skills but also nurtured a passion for patient care in me. The dedicated nursing faculty and state-of-the-art facilities enhanced my learning experience. Through Minerva Education of nursing's career placement services, I secured a noble position in a community healthcare setting. I am grateful for the opportunities KPC Medical College & Hospital & Fortis Hospital provided me, and I am excited to contribute to the field of nursing."



Minsarul Islam



Rinki Baidya

"I am incredibly grateful for the abet and guidance I received from Minerva Education of management. Their dedicated career services team played a crucial role in helping me secure a position in the management field. The practical training and mentorship I received from Atlast Health Point & Balananda Hospital during my time prepared me for the real-world challenges. I owe my successful placement to the valuable education and unwavering support from Minerva family."

"Studying paramedical was an enriching and fulfilling journey. The program not only equipped me with the necessary skills but also nurtured a passion for patient care in me. The dedicated MLT faculty and state-of-the-art facilities enhanced my learning experience. I am grateful for the opportunities LDPL Lab & Ashok Laboratories provided me, and I am excited to contribute to the field of paramedical(MLT)."



Bikram Das



ATHENA

INSTITUTE OF NURSING



info@minervaeducation.co.in | www.minervaeducation.co.in

West Bengal, India. | Tel: (+91) 9830364566, (+91) 9804170930

Nibarandutta Road, Singhir More, Amtala, West Bengal, India. Pin-743503